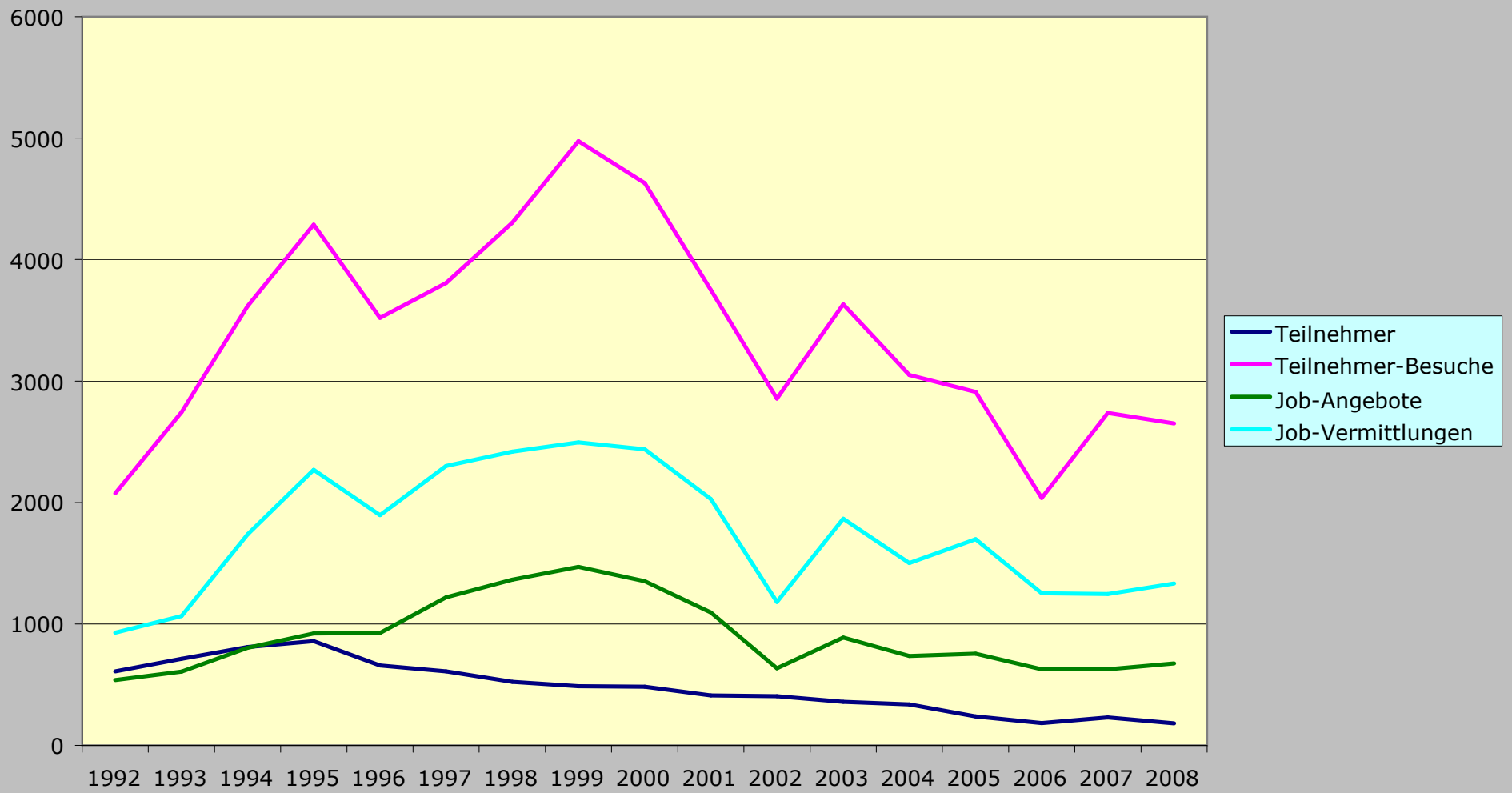


# Gesamtstatistik 1992 - 2008



|      | Teilnehmer | Innehmer-Besuch | Job-Angebote | b-Vermittlungen |
|------|------------|-----------------|--------------|-----------------|
| 1992 | 609        | 2075            | 537          | 927             |
| 1993 | 712        | 2743            | 608          | 1064            |
| 1994 | 810        | 3616            | 803          | 1738            |
| 1995 | 858        | 4288            | 922          | 2270            |
| 1996 | 657        | 3520            | 926          | 1895            |
| 1997 | 610        | 3807            | 1218         | 2300            |
| 1998 | 522        | 4304            | 1364         | 2418            |
| 1999 | 487        | 4975            | 1471         | 2494            |
| 2000 | 484        | 4630            | 1351         | 2437            |
| 2001 | 411        | 3750            | 1094         | 2029            |
| 2002 | 405        | 2855            | 635          | 1182            |
| 2003 | 358        | 3632            | 887          | 1866            |
| 2004 | 337        | 3050            | 735          | 1501            |
| 2005 | 238        | 2911            | 754          | 1698            |
| 2006 | 183        | 2038            | 626          | 1252            |
| 2007 | 229        | 2738            | 627          | 1246            |
| 2008 | 182        | 2652            | 674          | 1332            |